


**Available in 80 and 120 Gallon Universal Side/Top Connect Models**
**▶ 12-Year Limited Tank and Parts Warranty\***

- New flexible design allows installation of the collector feed & return in either the side or top connection ports
  - Brass drain valve
  - Special threaded stud located near the outlet for attachment of tank sensors
  - Temperature and pressure relief valve included
  - High efficiency heating element
  - Tank lining resists corrosion and prolongs tank life
  - Anode rod equalizes aggressive water action for prolonged tank life
- Cold water inlet, hot water outlet, relief valve and anode rod at top of tank for easy access and fast, economical installation
  - Automatic temperature control
  - Over temperature protector

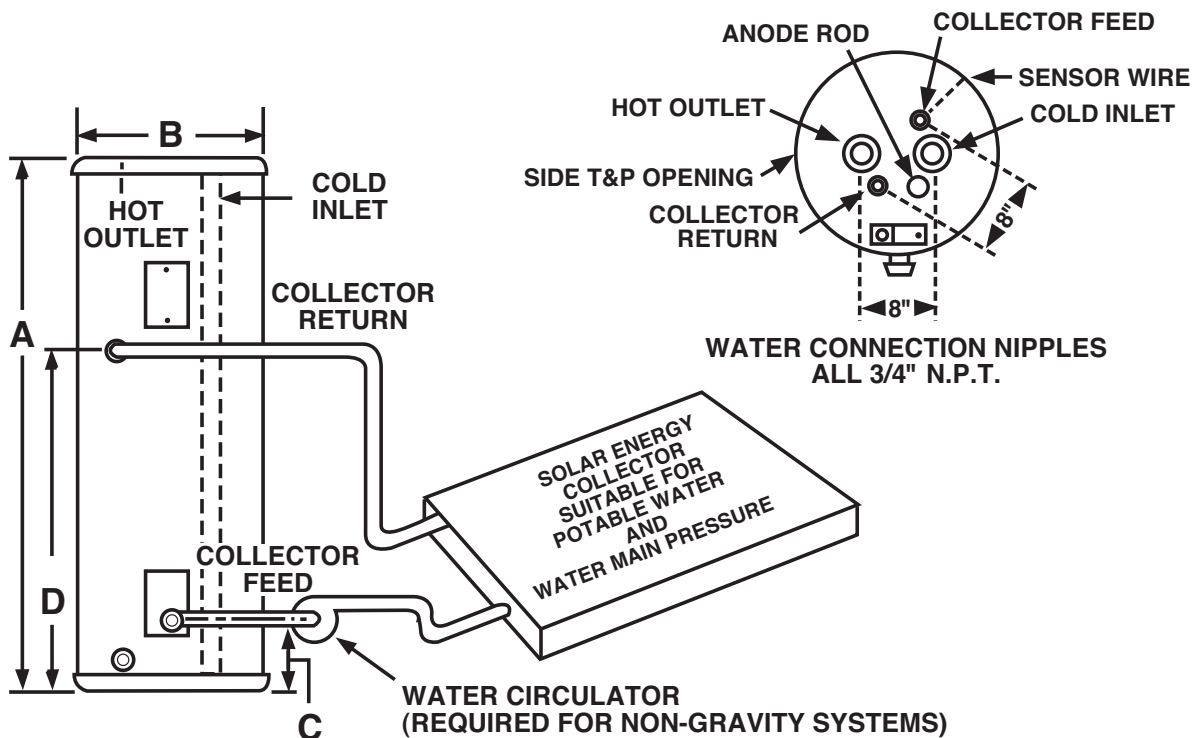
\*See Residential Warranty Certificate for complete information.



DESCRIPTION				ROUGHING IN DIMENSIONS (SHOWN IN INCHES)				ENERGY INFO.	
TYPE	GAL. CAP.	MODEL NUMBER	ELEMENT WATTAGE UPPER	HEIGHT A	DIAMETER B	HEIGHT TO COLLECTOR FEED C	HEIGHT TO COLLECTOR RETURN D	APPROX. SHIP WT. (LBS.)	APPROX. R-FACTOR
<b>UNIVERSAL SIDE/TOP CONNECT</b>									
TALL	80	SU12-80U-1	4500 W*	58-3/4	24-1/2	3	38-1/4	192	R-17.3
	120	SU12-120U-1	4500 W*	62	28-1/4	3-3/4	38-1/2	336	R-16.7
	80	SU12-80U-T	Storage Only	58-3/4	24-1/2	3	38-1/4	192	R-17.3
	120	SU12-120U-T	Storage Only	62	28-1/4	3-3/4	38-1/2	336	R-16.7

- \* Heaters furnished with standard 240 volt AC, single phase non-simultaneous wiring and 4500 watt heating element.
- If heating elements of different wattages than those shown are demanded by zone requirements, they must be specifically requested.
- SunEarth models meet all current requirements for solar storage tanks.
- The tanks are lined and are designed to operate up to 150 PSI.

**This unit uses the potable water within the tank for circulation through the solar system.**



*In keeping with its policy of continuous progress and product improvement, the manufacturer reserves the right to make changes without notice.*